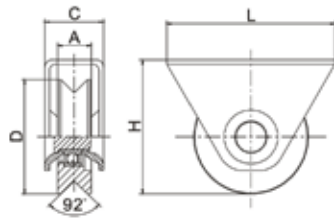
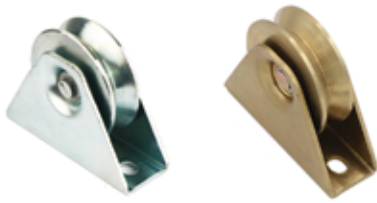


滑轮系列 Sliding Gate Wheel Series

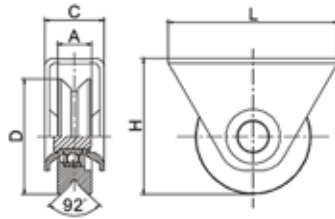
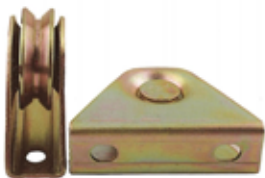
Sliding Gate Wheel with Exterior Bracket (Single Bearing, V groove)



Material: Steel
Surface: Yellow zinc plated/
Blue white zinc plated

NO.	D	A	C	H	L	WT(g)
50108501	50	15	25	57	75	266
50108502	58	17	28	64	85	392
50108503	68	20	35	80	100	638
50108504	78	20	35	85	100	809
50108505	88	20	36	100	132	1104
50108506	98	22	36	105	132	1391

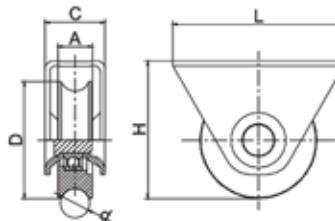
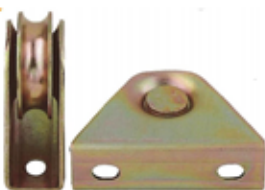
Sliding Gate Wheel with Exterior Bracket (Single Bearing, Y groove)



Material: Steel
Surface: Yellow zinc plated/
Blue white zinc plated

NO.	D	A	C	H	L	WT(g)
50108501Y	50	15	25	57	75	269
50108502Y	58	17	28	64	85	390
50108503Y	68	20	35	80	100	622
50108504Y	78	20	35	85	100	783
50108505Y	88	20	36	100	132	1103
50108506Y	98	22	36	105	132	1400

Sliding Gate Wheel with Exterior Bracket (Single Bearing, U groove)

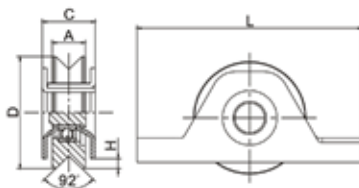


Material: Steel
Surface: Yellow zinc plated/
Blue white zinc plated

NO.	D	A	C	H	d	WT(g)
50108501U	50	15	25	57	12.5	265
50108502U	58	17	28	64	16.5	375
50108503U	68	20	35	80	16.5	576
50108504U	78	20	35	85	16.5	733
50108505U	88	20	36	100	16.5	1032
50108506U	98	22	36	105	16.5	1333

滑轮系列 Sliding Gate Wheel Series

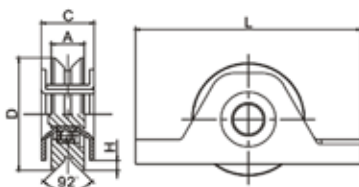
Sliding Gate Wheel with Interior Bracket (Single Bearing, V groove)



Material: Steel
Surface: Yellow zinc plated/
Blue white zinc plated

NO.	D	A	C	H	L	WT(g)
50110801	50	15	25	8.5	95	246
50110802	58	17	26	10	110	358
50110803	68	20	32	7	136	626
50110804	78	20	32	12	136	799
50110805	88	20	34	8	152	1022
50110806	98	22	34	13	152	1309

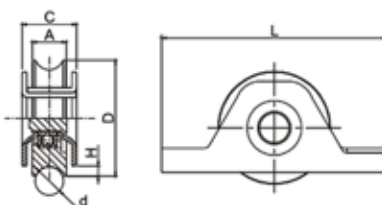
Sliding Gate Wheel with Interior Bracket (Single Bearing, Y groove)



Material: Steel
Surface: Yellow zinc plated/
Blue white zinc plated

NO.	D	A	C	H	L	WT(g)
50110801Y	50	15	25	8.5	95	249
50110802Y	58	17	26	10	110	355
50110803Y	68	20	32	7	136	606
50110804Y	78	20	32	12	136	716
50110805Y	88	20	34	8	152	1021
50110806Y	98	22	34	13	152	1319

Sliding Gate Wheel with Interior Bracket (Single Bearing, U groove)

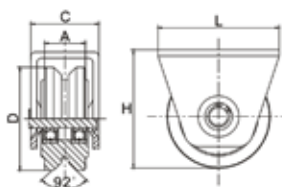


Material: Steel
Surface: Yellow zinc plated/
Blue white zinc plated

NO.	D	A	C	H	d	WT(g)
50110801U	50	15	25	8.5	12.5	245
50110802U	58	17	26	10	16.5	340
50110803U	68	20	32	7	16.5	566
50110804U	78	20	32	12	16.5	723
50110805U	88	20	34	8	16.5	947
50110806U	98	22	34	13	16.5	1251

滑轮系列 Sliding Gate Wheel Series

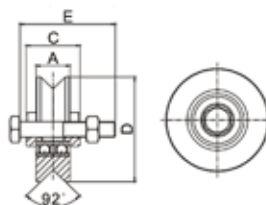
Sliding Gate Wheel with Exterior Bracket (Double Bearing, Y groove)



Material: Steel
Surface: Yellow zinc plated/
Blue white zinc plated

NO.	D mm	A	C	H	L	WT(g)
50110901	58	31	45	67	48	600
50110902	68	31	45	78	80	950
50110903	78	31	45	83	80	1235
50110904	98	34	49	105	108	1910

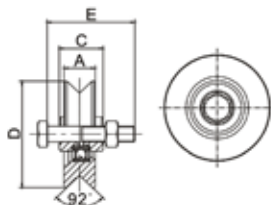
Sliding Gate Wheel with Bolt (Double Bearing, V groove)



Material: Steel
Surface: Yellow zinc plated/
Blue white zinc plated

NO.	D mm	A	C	E	WT(g)
50108602	68	25	30	M10*55	490
50108603	78	25	30	M10*55	715
50108604	88	25	30	M14*70	1100
50108605	98	25	30	M14*70	1416
50108606	118	30	42	M14*70	2204
50108607	138	30	42	M14*70	3057
50108608	158	30	42	M14*70	4141
50108609	178	30	42	M14*70	5433
50108610	198	30	42	M14*70	6500

Sliding Gate Wheel with Bolt (Single Bearing, V groove)

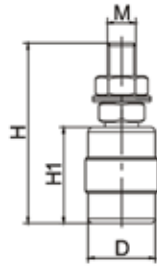


Material: Steel
Surface: Yellow zinc plated/
Blue white zinc plated

NO.	D mm	A	C	E	WT(g)
50111001	38	11	24	M8*40	85
50111002	50	15	26	M8*40	163
50111003	58	17	24	M10*55	272
50111004	68	20	28	M10*55	443
50111005	78	20	28	M10*55	616
50111006	88	20	30	M12*60	791
50111007	98	22	30	M12*60	1078
50111008	118	25	34	M14*70	1815
50111009	138	25	44	M16*75	2662

尼龙轮系列Nylon Roller Series

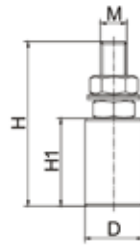
Nylon Roller (Bulge in Middle Surface)



Wheel:Nylon
Threaded rod:Yellow zinc plated

NO.	M	D mm	H1	M	H	WT(g)
50108401	M12	25	40	12	75	117
50108402	M12	31	40	12	75	130
50108403	M16	40	44	16	95	236
50108405	M16	40	60	16	104	303
50108406	M18	40	100	18	135	450
50108407	M18	40	120	18	157	580
50108408	M18	40	150	18	195	610
50108409	M18	40	250	18	300	960

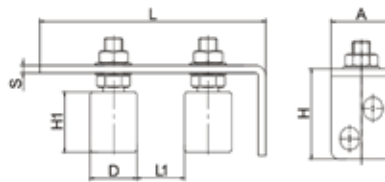
Nylon Roller



Wheel:Nylon
Threaded rod:White zinc plated

NO.	M	D mm	H1	M	H	WT(g)
50110401	M12	25	40	12	74	117
50110402	M12	30	40	12	75	124
50110403	M16	40	48	16	90	232
50110404	M14	40	60	14	104	260

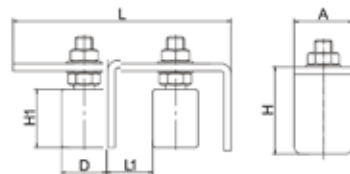
Guide Bracket with Nylon Roller



Wheel:Nylon
Threaded rod/Plat
:Yellow zinc plated

NO.	D mm	H1	A	H	L	S	L1	WT(g)
501548	30	40	40	60	150	5	8-68	510

Nylon Roller (Bulge in Middle Surface)

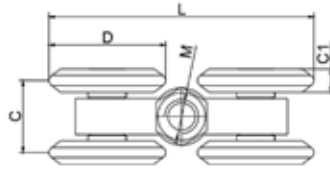


Wheel:Nylon
Threaded rod/Plat
:Yellow zinc plated

NO.	D mm	H1	A	H	L	L1	WT(g)
501546	30	40	40	42	180	8-68	510

挂轮系列Hanging Door Roller Series

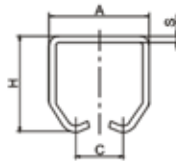
Hanging Door Roller(4 Rollers)



Material:45#Steel
Surface:Zinc plated

NO.	D mm	C	C1	L	M	WT(g)
501531	55	41	50	115	12	530

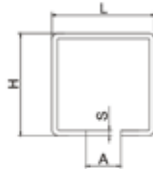
Hanging Door Roller Rail



Material:45#Steel
Surface:Zinc plated

NO.	A mm	H	C	S	WT(kg)/m
50110601	35	32	20	1.5	1.79/m
50110602	50	46	29	2	2.64/m
50110603	60	67	34	2	3.55/m
50110604	42	54	24	2.5	3.1/m

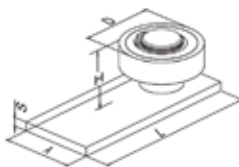
Cantilever Gate Track (for 60X60 Wheels & 70X70,80X80 Wheels)



Material:45#Steel
Surface:Zinc plated

NO.	A mm	L	H	S	Length
50108301	15	47	62	1.5	2.44m
50108302	15	47	62	1.5	3.05m
50108303	15	47	62	1.5	3.66m

Hanging Door Roller(1 Bearing with Plate)



Material:45#Steel
Surface:Zinc plated

NO.	D mm	H	A	L	S	WT(g)
50110501	52	31	50	120	6	652
50110502	62	32	60	120	8	1043
50110503	72	33	75	150	10	1754
50110504	42	28	40	170	5	395
50110505	100	41	100	200	10	2874

挂轮系列Hanging Door Roller Series

Door Pulley(Single hanging wheel)



Material: Steel
Surface: Zinc Plated

NO.	Wheel Dia.	Width	Thickness	Screw	Screw length
50111101	38mm	39mm	4mm	M12	100mm
50111102	53mm	42mm	6mm	M16	120mm

Door Pulley(Double hanging wheel)



Material: Steel
Surface: Zinc Plated

NO.	Wheel Dia.	Width	Thickness	Screw	Screw length
50111201	38mm	38mm	4mm	M12	100mm
50111202	53mm	41mm	6mm	M16	124mm

Door Pulley



Material: Steel
Surface: Zinc Plated

NO.	Wheel Dia.	Width	Thickness	Screw	Screw length
501113	55mm	41mm	6mm	M12	110mm

工业脚轮Industrial Caster

Industrial Caster Flate Top(Universal)



Wheel Material: Rubber
Surface: Zinc Plated

NO.	Wheel Dia.	Wheel Width	Capability	Hight	Plate Size
50108701	25mm	12mm	8kg	34mm	38*33mm
50108702	30mm	12mm	10kg	38mm	38*33mm
50108703	40mm	17mm	30kg	48mm	47*37mm
50108704	48mm	21mm	35kg	64mm	60*47mm
50108705	64mm	25mm	45kg	80mm	70*60mm

Industrial Caster Flate Top(Universal)



Wheel Material: Rubber
Surface: Zinc Plated

NO.	Wheel Dia.	Wheel Width	Capability	Hight	Plate Size
50109001	100mm	50mm	175kg	135mm	114*100mm
50109002	125mm	50mm	200kg	155mm	114*100mm
50109003	150mm	50mm	225kg	180mm	114*100mm
50109004	200mm	50mm	200kg	225mm	114*100mm

Industrial Caster Flate Top(Fixed)



Wheel Material: Rubber
Surface: Zinc Plated

NO.	Wheel Dia.	Wheel Width	Capability	Hight	Plate Size
50109101	100mm	50mm	200kg	143mm	114*100mm
50109102	125mm	50mm	225kg	168mm	114*100mm
50109103	150mm	50mm	250kg	198mm	114*100mm
50109104	200mm	50mm	275kg	240mm	114*100mm

Light Type Caster(Universal)



Wheel Material: PP
Surface: Zinc Plated

NO.	Wheel Dia.	Wheel Width	Capability	Hight	Plate Size
50111401	40mm	17mm	20kg	50mm	40*38mm
50111402	50mm	20mm	25kg	65mm	58.5*46.5mm
50111403	65mm	25mm	45kg	83mm	70*58mm
50111404	75mm	25mm	50kg	93mm	70*58mm

工业脚轮Industrial Caster

Industrial Caster Flate Top(Fixed)



Wheel Material: Rubber
Surface: Zinc Plated

NO.	Wheel Dia.	Wheel Width	Capability	Hight	Plate Size
50111501	75mm	22mm	50kg	93mm	82*66mm
50111502	85mm	25mm	60kg	108mm	60*42mm
50111503	100mm	30mm	70kg	128mm	100*80mm
50111504	125mm	37.5mm	100kg	152mm	100*80mm
50111505	160mm	40mm	130kg	197mm	135*110mm
50111506	200mm	50mm	200kg	237mm	135*110mm

Industrial Caster Flate Top(Universal)



Wheel Material: Rubber
Surface: Zinc Plated

NO.	Wheel Dia.	Wheel Width	Capability	Hight	Plate Size
50108801	75mm	22mm	50kg	93mm	82*66mm
50108802	85mm	25mm	60kg	108mm	82*66mm
50108803	100mm	30mm	70kg	128mm	100*80mm
50108804	125mm	37.5mm	100kg	152mm	100*80mm
50108805	160mm	40mm	130kg	197mm	135*110mm
50108806	200mm	50mm	200kg	237mm	135*110mm

Industrial Caster Flate Top(Side Break Universal)



Wheel Material: Rubber
Surface: Zinc Plated

NO.	Wheel Dia.	Wheel Width	Capability	Hight	Plate Size
50108906	75mm	22mm	50kg	93mm	82*66mm
50108907	85mm	25mm	60kg	108mm	60*42mm
50108908	100mm	30mm	70kg	128mm	100*80mm
50108909	125mm	37.5mm	100kg	152mm	100*80mm
50108910	160mm	40mm	130kg	197mm	135*110mm
50108911	200mm	50mm	200kg	237mm	135*110mm

重型脚轮Heavy Duty Caster

Heavy Duty Caster(Universal)



Wheel Material: PVC
Surface: Zinc Plated

NO.	Wheel Dia.	Wheel Width	Capability	Hight	Plate Size
50109302	50mm	23mm	60kg	65mm	70*50mm
50109303	63mm	32mm	70kg	93mm	92*61mm
50109304	75mm	32mm	80kg	105mm	92*61mm
50109305	100mm	32mm	100kg	128mm	92*61mm
50109306	125mm	32mm	110kg	158mm	92*61mm

Heavy Duty Caster(Side Break Universal)



Wheel Material: PVC
Surface: Zinc Plated

NO.	Wheel Dia.	Wheel Width	Capability	Hight	Plate Size
50109402	50mm	23mm	60kg	65mm	70*50mm
50109403	63mm	32mm	70kg	93mm	92*61mm
50109404	75mm	32mm	80kg	105mm	92*61mm
50109405	100mm	32mm	100kg	128mm	92*61mm
50109406	125mm	32mm	110kg	158mm	92*61mm

Heavy Duty Caster(Fixed)



Wheel Material: PVC
Surface: Zinc Plated

NO.	Wheel Dia.	Wheel Width	Capability	Hight	Plate Size
50111601	50mm	23mm	60kg	65mm	70*50mm
50111602	63mm	32mm	70kg	93mm	92*61mm
50111603	75mm	32mm	80kg	105mm	92*61mm
50111604	100mm	32mm	100kg	128mm	92*61mm
50111605	125mm	32mm	110kg	158mm	92*61mm

家具脚轮 Furniture Caster

Furniture Ball Caster(Universal)



Wheel Material: PP
Surface: Chrome Plated

NO.	Wheel Dia.	Wheel Width	Capability	Hight	Plate Size
50109201	40mm	40mm	15-20kg	54mm	38*38mm
50109202	50mm	50mm	20-25kg	63mm	38*38mm

Furniture Ball Caster(Universal,With Stem)



Wheel Material: PP
Surface: Chrome Plated

NO.	Wheel Dia.	Wheel Width	Capability	Hight	Insert rod
50153704	40mm	40mm	15-20kg	53mm	11*22mm
50153705	50mm	50mm	20-25kg	61mm	11*38mm

Furniture Ball Caster(Universal,With Lead Screw)



Wheel Material: PP
Surface: Chrome Plated

NO.	Wheel Dia.	Wheel Width	Capability	Hight	Lead Screw Size
50154901	40mm	40mm	15-20kg	50mm	15*8mm
50154902	50mm	50mm	20-25kg	60mm	15*8mm

Furniture Caster(Universal,With Stem)



PP Shell
Wheel Material: PP
Stem Zinc Plated

NO.	Wheel Dia.	Wheel Width	Capability	Hight	Plate Size
501550	50mm	36mm	45kg	62mm	11*22mm